

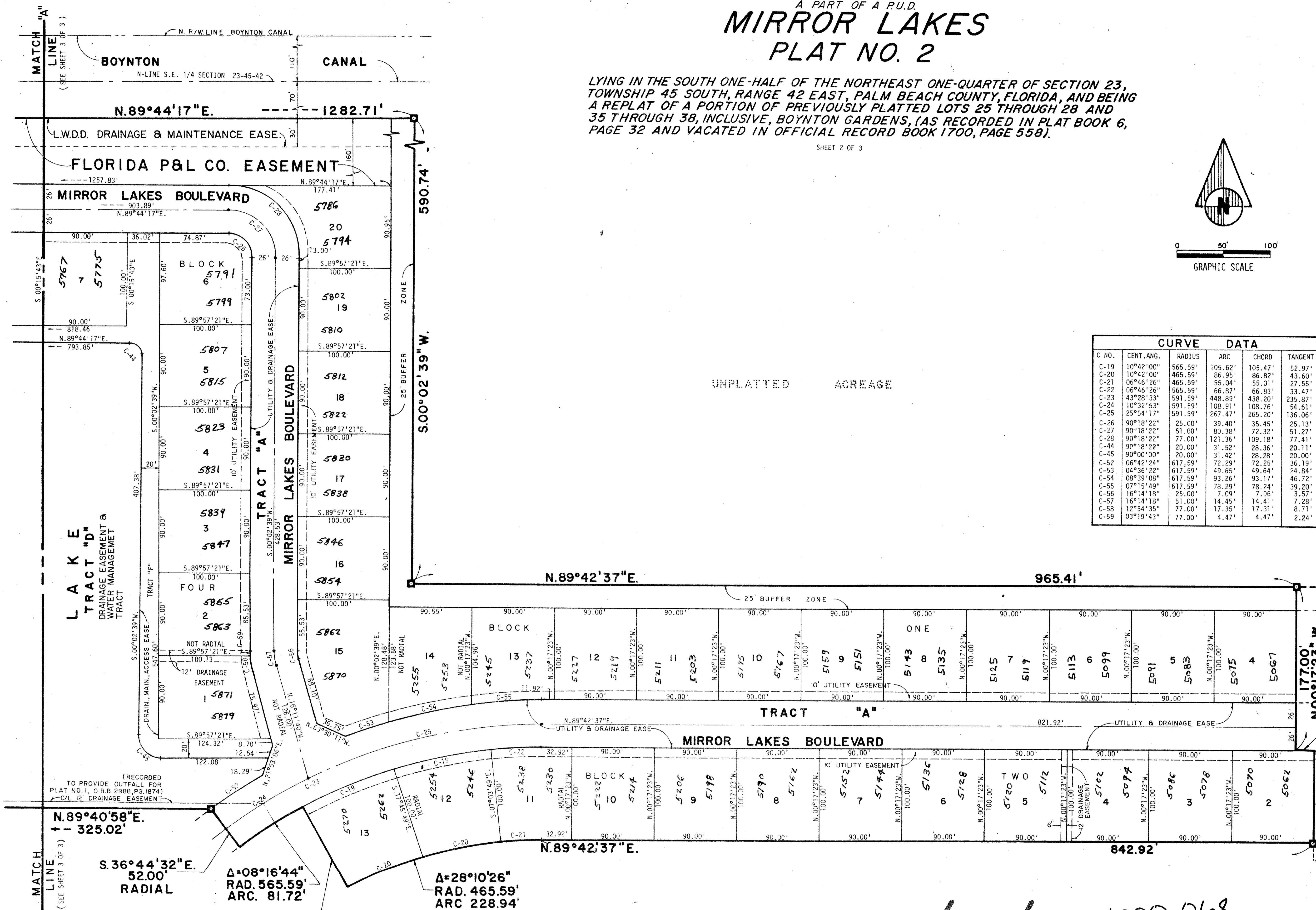
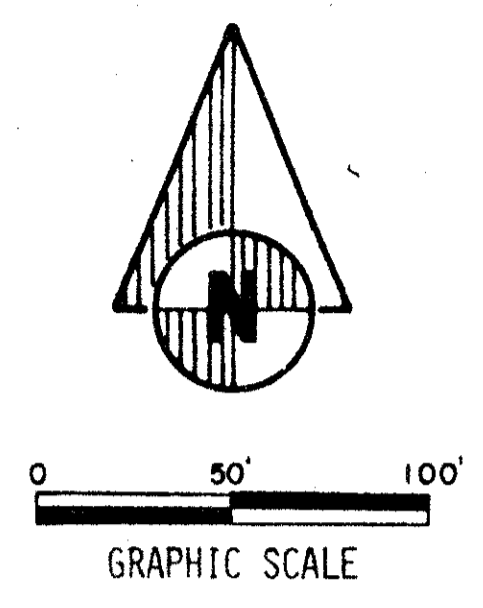
A PART OF A P.U.D.
MIRROR LAKES
PLAT NO. 2

LYING IN THE SOUTH ONE-HALF OF THE NORTHEAST ONE-QUARTER OF SECTION 23,
 TOWNSHIP 45 SOUTH, RANGE 42 EAST, PALM BEACH COUNTY, FLORIDA, AND BEING
 A REPLAT OF A PORTION OF PREVIOUSLY PLATTED LOTS 25 THROUGH 28 AND
 35 THROUGH 38, INCLUSIVE, BOYNTON GARDENS, (AS RECORDED IN PLAT BOOK 6,
 PAGE 32 AND VACATED IN OFFICIAL RECORD BOOK 1700, PAGE 558).

SHEET 2 OF 3

136

STATE OF FLORIDA
 COUNTY OF PALM BEACH
 THIS PLAT WAS FILED FOR
 RECORD AT _____ M.
 THIS _____ DAY OF _____
 A.D., 1978 AND DULY RE-
 CORDED IN PLAT BOOK _____
 ON PAGES _____ AND _____
 JOHN B. DUNKLE, CLERK
 CIRCUIT COURT
 BY: _____ DC



CURVE DATA					
C NO.	CENT. ANG.	RADIUS	ARC	CHORD	TANGENT
C-19	10°42'00"	565.59'	105.62'	105.47'	52.97'
C-20	10°42'00"	465.59'	86.95'	86.82'	43.60'
C-21	06°46'26"	465.59'	55.04'	55.01'	27.55'
C-22	06°46'26"	565.59'	66.87'	66.83'	33.47'
C-23	43°28'33"	591.59'	448.89'	438.20'	235.87'
C-24	10°32'53"	591.59'	108.91'	108.76'	54.61'
C-25	25°54'17"	591.59'	267.47'	265.20'	136.06'
C-26	90°18'22"	25.00'	39.40'	35.45'	25.13'
C-27	90°18'22"	51.00'	80.38'	72.32'	51.27'
C-28	90°18'22"	77.00'	121.36'	109.18'	77.41'
C-44	90°18'22"	20.00'	31.52'	28.36'	20.11'
C-45	90°00'00"	20.00'	31.42'	28.28'	20.00'
C-52	06°42'24"	617.59'	72.29'	72.25'	36.19'
C-53	04°36'22"	617.59'	49.65'	49.64'	24.84'
C-54	08°39'08"	617.59'	93.26'	93.17'	46.72'
C-55	07°15'49"	617.59'	78.29'	78.24'	39.20'
C-56	16°14'18"	25.00'	7.09'	7.06'	3.57'
C-57	16°14'18"	51.00'	14.45'	14.41'	7.28'
C-58	12°54'35"	77.00'	17.35'	17.31'	8.71'
C-59	03°19'43"	77.00'	4.47'	4.47'	2.24'

UNPLATTED ACRES

(RECORDED
 PLAT NO. 1, O.R.B. 2988, PG. 1874)
 C/L 12' DRAINAGE EASEMENT

N. 89°40'58" E.
 325.02'

S. 36°44'32" E.
 52.00'
 RADIAL

Δ=08°16'44"
 RAD. 565.59'
 ARC. 81.72'

Δ=28°10'26"
 RAD. 465.59'
 ARC. 228.94'

S. 28°27'49" E.
 100.00'
 RADIAL

MIRROR LAKES PLAT NO. 1
 (BK. 35, PP. 163-167)

23/45/42 1000-068

35

MIRROR LAKES PLAT #2 P.U.D.

- NOTES:
- INDICATES A 4" x 4" PERMANENT REFERENCE MONUMENT, FLA. CERT. #2424.
 - INDICATES A PERMANENT CONTROL POINT, FLA. CERT. #2424.
 - THERE SHALL BE NO BUILDINGS OR ANY KIND OF CONSTRUCTION OR TREES OR SHRUBS PLACED ON DRAINAGE EASEMENTS.
 - THERE SHALL BE NO BUILDINGS OR PERMANENT STRUCTURES PLACED ON UTILITY EASEMENTS.
 - BUILDING SETBACK LINES SHALL BE AS REQUIRED BY CURRENT PALM BEACH COUNTY ZONING REGULATIONS.
- THIS INSTRUMENT WAS PREPARED BY ROBERT WHIDDEN IN THE OFFICES OF BENCH MARK LAND SURVEYING, INC., 1000 N. PALM BEACH LAKES BLVD., WEST PALM BEACH, FL 33409. PHONE NO. 688-XXXX.

CONRAD W. SCHAEFER CONSULTING ENGINEERS, INC.
 PALM BEACH COUNTY, FLORIDA

37/136
 MIRROR LAKES
 PLAT NO. 2

DESIGNED	DRAWN	CHECKED	JOB NO.	DRAWING NO.
	DR		78-024	
DATE	SCALE	APPROVED		SHEET OF
3-6-78	1"=50'			2 3